

HPLC Application

ID No.: 25735

Organic Acids on Luna Omega Polar 5u 250 x 4.6mm -

Column: Luna Omega 5u Polar C18 100A, LC Column 250 x 4.6 mm, Ea

Dimensions: 250 x 4.6 mm ID

Order No: 00G-4754-E0

Elution Type: Isocratic

Eluent A: 100mM Potassium Phosphate Monobasic pH 2.5

| Gradient | Step No. | Time (min) | Pct A |
|-----------------|----------|------------|-------|
| Profile: | 1 | 10 | 100 |

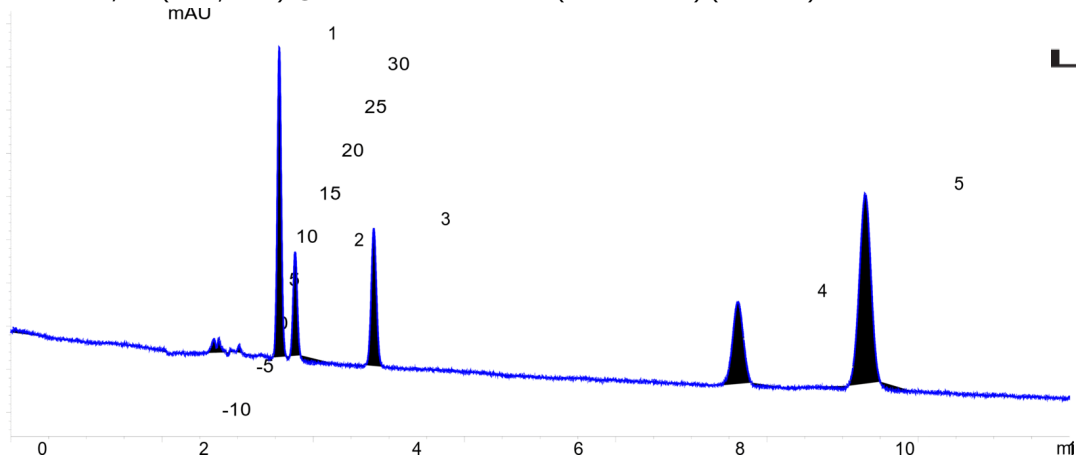
Flow Rate: 1.5 mL/min

Col. Temp.: 35 °C

Detection: LC/UV (DAD, PDA) @ 226.000000000 nm (nanometers) (ambient)



Products used in this application:



ANALYTES:

- 1** Tartaric acid
Retention Time: 3.551 min
- 2** Quinic Acid
Retention Time: 3.76 min
- 3** Malic Acid
Retention Time: 4.801 min
- 4** Citric Acid
Retention Time: 9.617 min
- 5** Fumaric Acid
Retention Time: 11.297 min

