

# HPLC Application

ID No.: 2574

## Cough and Cold

**Column:** Luna® 5 µm Phenyl-Hexyl 100 Å, LC Column 150 x 4.6 mm, Ea

**Dimensions:** 150 x 4.6 mm ID

**Order No:** 00F-4257-E0

**Elution Type:** Isocratic

**Eluent A:** 20 mM Potassium phosphate pH 10.0

**Eluent B:** Acetonitrile

**Eluent C:** Methanol

| Gradient Profile: | Step No. | Time (min) | Pct A | Pct B | Pct C |
|-------------------|----------|------------|-------|-------|-------|
|                   | 1        | 0          | 35    | 35    | 30    |

**Flow Rate:** 1.5 mL/min

**Col. Temp.:** ambient

**Detection:** UV-Vis Abs.-Variable Wave.(UV) @ 214 nm (ambient)

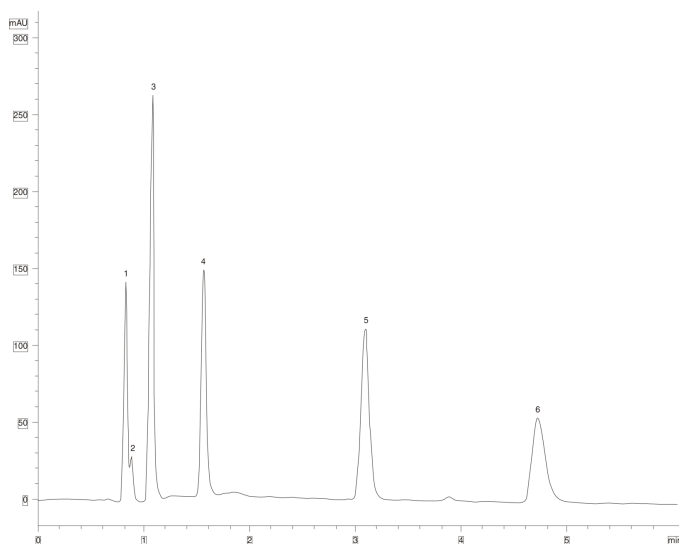
**Analyst Note:** SecurityGuard™ Guard Cartridge System extends column lifetime.

- SecurityGuard Cartridges, Phenyl 4 x 3.0mm, 10/Pk Part No.: AJ0-4351

- Holder Part No.: KJ0-4282



Products used in this application:



### ANALYTES:

- 1 Hydrogen bromide
- 2 Maleic acid
- 3 Acetaminophen
- 4 Pseudoephedrine
- 5 Chlorphenamine
- 6 Dextromethorphan

