

Clean-Up of Phospholipids in Human Plasma Comparing PPT VS. Strata-X PRO SPE on a Kinetex 2.6 µm C18 50 x 2.1 mm

Column: Kinetex® 2.6 µm C18 100 Å, LC Column 50 x 2.1 mm, Ea

Dimensions: 50 x 2.1 mm ID

Order No: 00B-4462-AN

Elution Type: Gradient

Eluent A: 0.1% Formic acid in water

Eluent B: 0.1% Formic acid in methanol

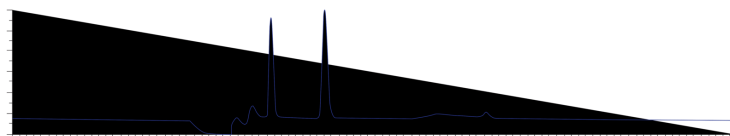
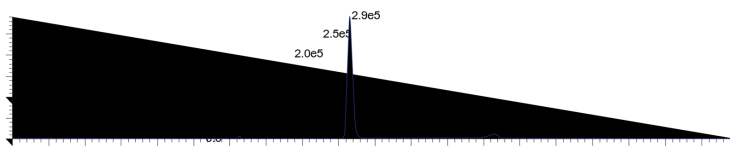
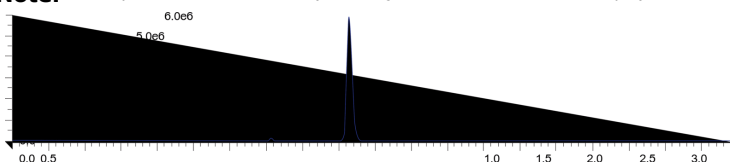
Gradient Profile:	Step No.	Time (min)	Pct A	Pct B
	1	0	60	40
	2	0.5	5	95
	3	11.5	5	95
	4	11.51	60	40
	5	13.5	60	40

Flow Rate: 400 µL/min

Col. Temp.: 40 °C

Detection: LC/MS/MS @ (40 °C)

Analyst Note: Analyte dilution not needed (Direct injection of the extracted sample)



ANALYTES:

- 1 Lyso PC
Retention Time: 2.4 min
- 2 PC-1
Retention Time: 6 min
- 3 PC-2
Retention Time: 6.5 min



Products used in this application:



Sample Preparation Details

for HPLC Application ID No.: 25779

Clean-Up of Phospholipids in Human Plasma Comparing PPT VS. Strata-X PRO SPE on a Kinetex 2.6 µm C18 50 x 2

PRODUCT DESCRIPTION:

Strata X Pro, 96-Well Plate, 30mg/well

Order No.: 8E-S536-TGA

SOLID PHASE EXTRACTION (SPE) PROCEDURE:

Note: The solvent volumes shown below are for a bed mass.

The solvent volumes will need to be adjusted for a smaller or larger bed mass.

Condition:

Load:

Wash:

Dry:

Elute:

Final Prep and Analysis:

Sample Pre-treatment:

- Add 100 µL Serum to tube

Inject: 2 µL on HPLC LC/MS/MS @ (40°C)

ANALYTES:

Spiked Conc.
(ng/mL)

Log P

pKa

% Rec

%RSC
(n=0)

- 1 Lyso PC
- 2 PC-1
- 3 PC-2

0
0
0

Note: This method is designed as a convenient starting point for further investigation and can be tailored to meet your extraction goals.
Call your local Phenomenex Representative for assistance in method development and optimization techniques.

©2025 Phenomenex Inc. All rights reserved.

For more information contact your Phenomenex Representative at info@phenomenex.com



Phenomenex products are available worldwide.

www.phenomenex.com.cn

info@phenomenex.com