

## Analysis of Chloroquine and Its Metabolite by LC-MS/MS using Kinetex® Core-Shell F5 LC Columns

**Column:** Kinetex® F5 2.6µm 100 Å, LC Column 50 x 2.1 mm, Ea

**Dimensions:** 50 x 2.1 mm ID

**Order No:** 00B-4723-AN

**Elution Type:** Gradient

**Eluent A:** 0.1% Formic Acid in Water

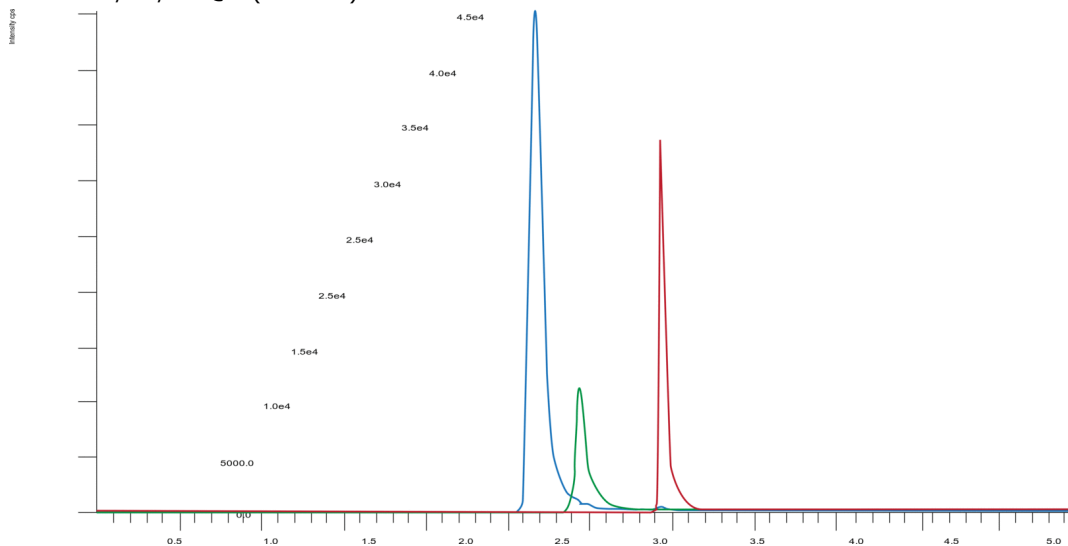
**Eluent B:** Methanol

Gradient Profile:	Step No.	Time (min)	Pct A	Pct B
	1	0	98	2
	2	2	93	7
	3	3	85	15
	4	3.2	60	40
	5	4.2	5	95
	6	4.3	98	2
	7	6	98	2

**Flow Rate:** 0.5 mL/min

**Col. Temp.:** 20 °C

**Detection:** LC/MS/MS @ (ambient)



### ANALYTES:

**1** Desethylchloroquine (DCQ)

Retention Time: 2.67 min

**2** Hydroxchloroquine (HCQ)

Retention Time: 2.95 min

**3** Chloroquine (CQ)

Retention Time: 3.43 min



Products used in this application:

