

HPLC Application

ID No.: 25922

USP Chloroquine Phosphate Assay on Luna 5 µm C18(2) 150 x 4.6 mm - Standard Solution

Column: Luna® 5 µm C18(2) 100 Å, LC Column 150 x 4.6 mm, Ea

Dimensions: 150 x 4.6 mm ID

Order No: 00F-4252-E0

Elution Type: Gradient

Eluent A: A = 0.4% triethylamine in methanol and Buffer (70:30) (Buffer: 1.4 g/L of anhydrous diethylamine in water. A

Gradient

Profile:	Step No.	Time (min)	Pct A
	1	0	100
	2	20	100

Flow Rate: 1 mL/min

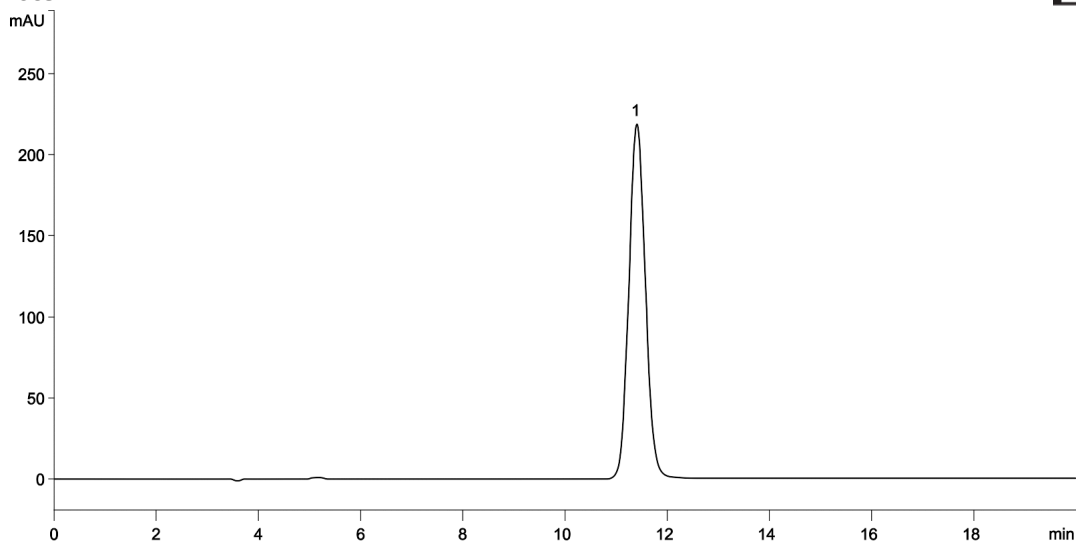
Col. Temp.: 26 °C

Detection: LC/UV (DAD, PDA) @ 260.000000000 nm (nanometers) (26 °C)

Analyst Note: Sample was at 0.3 mg/mL



Products used in this application:



ANALYTES:

1 Chloroquine phosphate

Retention Time: 11.407 min

