

# HPLC Application

ID No.: 3285

## Atenolol

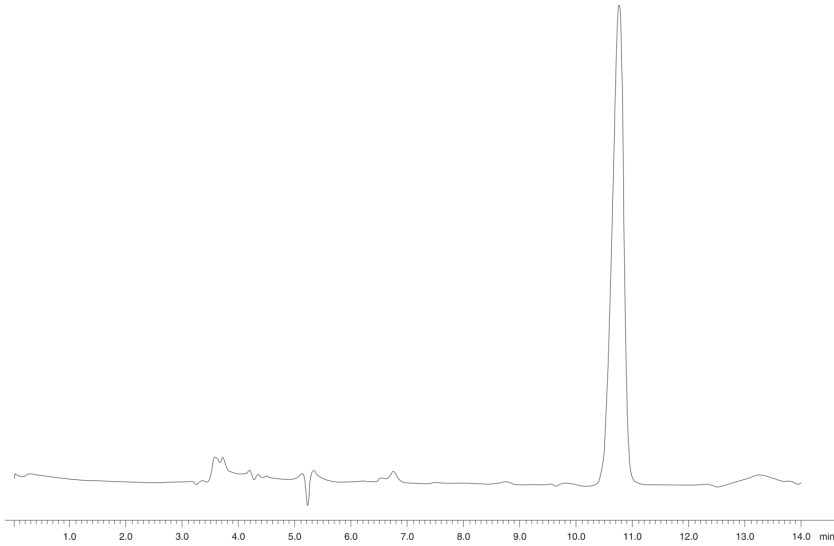
**Column:** Luna® 5 µm C18(2) 100 Å, LC Column 250 x 4.6 mm, Ea  
**Dimensions:** 250 x 4.6 mm ID  
**Order No:** 00G-4252-E0  
**Elution Type:** Isocratic  
**Eluent A:** Methanol  
**Eluent B:** 5nM Dibasic sodium phosphate with 7mM 1-Heptanesulfonate  
**Gradient**

Step No.	Time (min)	Pct A	Pct B
1	0	30	70

**Profile:**  
**Flow Rate:** 0.6 mL/min  
**Col. Temp.:** ambient  
**Detection:** UV-Vis Abs.-Variable Wave.(UV) @ 226 nm (ambient)



Products used in this application:



### ANALYTES:

1 Atenolol