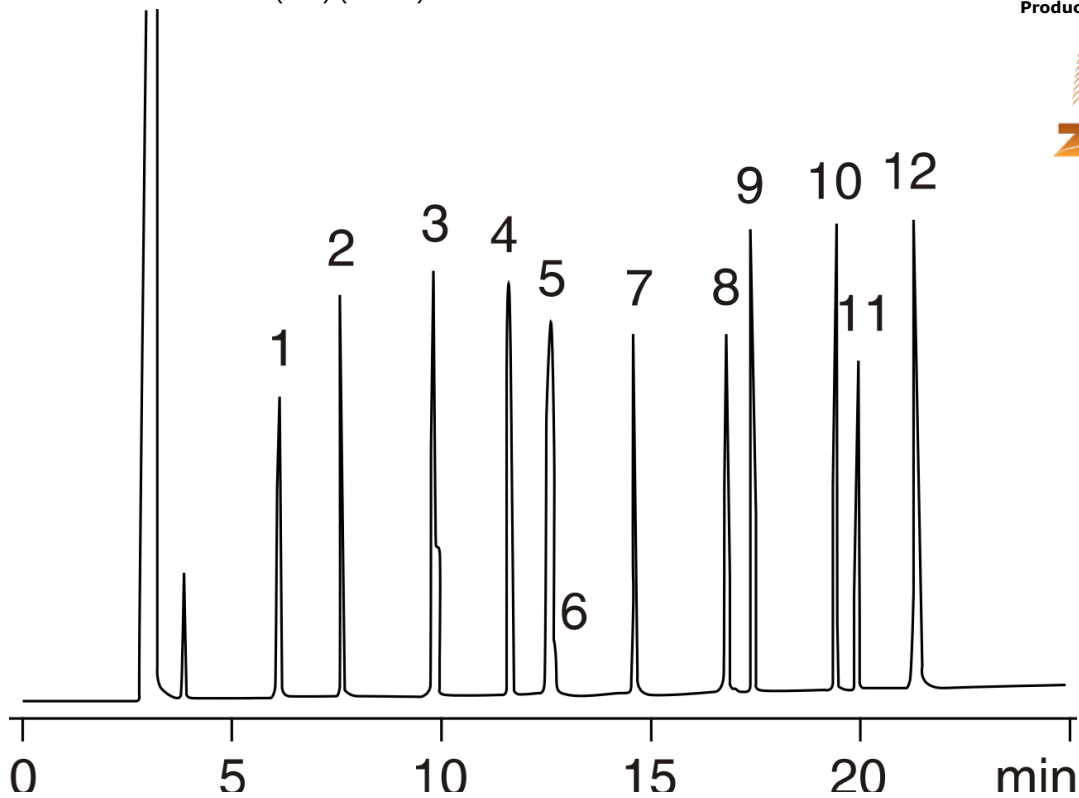


**Test Conditions for Grob Test Mix on Zebron ZB-50****Column:** Zebron<sup>™</sup> ZB-50, GC Cap. Column 30 m x 0.32 mm x 0.25  $\mu$ m, Ea**Phase:** 50% Phenyl 50% Dimethylpolysiloxane**Dimensions:** 30 meters x 0.32 mm x 0.25  $\mu$ m**Order No:** 7HM-G004-11**Oven Profile:** 40 to 190°C at 6°C/min**Carrier Gas:** Constant Flow Helium, 0.97 mL/min**Injection:** Split 100:1 1  $\mu$ L @ 250°C**Detection:** Flame Ionization (FID) (300°C)**Products used in this application:**

## Test Conditions for Grob Test Mix on Zebron ZB-50

### ANALYTES:

- 1 2,3-Butanediol
- 2 Decane
- 3 Undecane
- 4 1-Octanol
- 5 1-Nonanal
- 6 2-Ethylhexanoic acid
- 7 2,6-Dimethylphenol
- 8 2,6-Dimethylaniline
- 9 Methyl decanoate
- 10 Methyl undecanoate
- 11 Dicyclohexylamine
- 12 Methyl dodecanoate

